



559T(W) Convoluted PTFE Hose

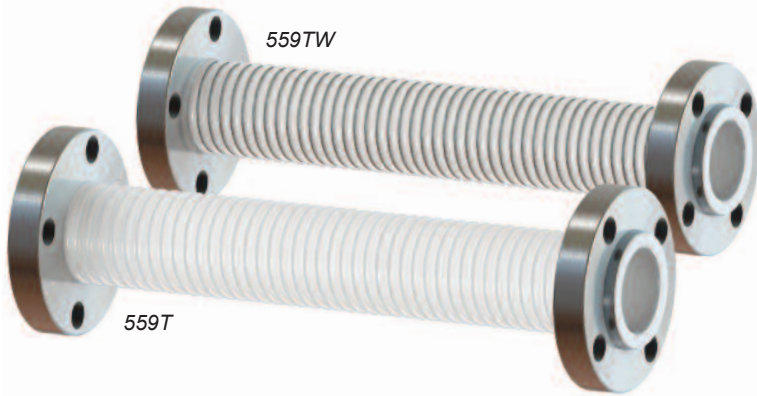


NON-METALLIC HOSE ASSEMBLIES
Engineered Solutions For Pipe Motion

Canada 

www.thorburnflex.com

559T(W) PTFE Hose Assemblies



| Thorburn Models 559T & 559TW PTFE Hose Assemblies |

Thorburn's 559T Hose Assemblies offer the flexibility and universal corrosion resistance of PTFE. Thorburn's 559T are used as a flexible element to transfer corrosive media in process reactors and vessels. 559TW hose is available with external root wire made of 316SS (**Code S6**) material to increase tight radius bending stability. Standard flanges are 316SS (**Code S6**) Material 150# Drilling. Also available in type Vinyl Ester Fiberglass (**Code VEF**) composite.

Advantages

- Unmatched corrosive resistant capabilities
- Non-stick, self cleaning and low coefficient of friction
- Meets Pharmacopoeia Class VI & 3A standards
- Ultra flexible and resistant to temperature fluctuations
- Properties do not change over time
- 4 to 1 safety factor for all sizes

Hose Construction

Inner Core: Pure unpigmented corrugated PTFE.

559T(W) is available with Polypropylene, Kynar and SS304 braid for higher pressure applications

Reinforcement

External root reinforcement (**Code W**) wire to increase tight radius bending stability.

Temperature Range

-50°C to 260°C (-58°F to 392°F)

Vanstone Floating Flanges

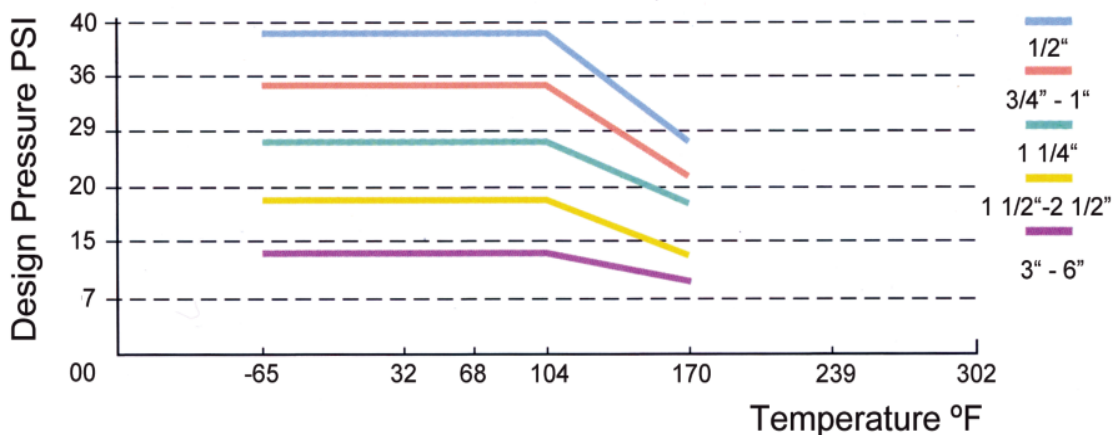
Providing only PTFE contact with media. Standard flanges 316SS Material 150# Drilling

Also available in type Vinyl Ester Fiberglass (VEF) composite.

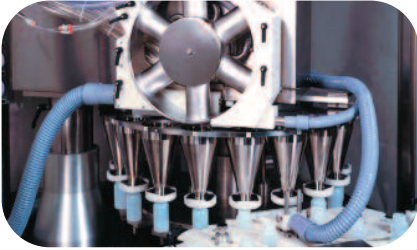
Applications

- Chemical processing
- Deionized water transfer
- Food and beverage processing
- Medical, laboratory and robotics
- Paint spray systems
- Pharmaceutical processing and packaging
- Ultra-pure fluid systems
- Pure air systems
- Push-pull cable jacketing

Temperature/ Pressure De-rating Factor



559T(W) PTFE Hose Assemblies



Pharmaceutical powder filling machine

Pharmaceutical

The properties of PTFE has many benefits for the Pharmaceutical industry where high purity and sanitation are necessary. PTFE does not require passivation or electro-polishing is impervious to cracking and rarely requires repair. Furthermore, PTFE is chemically inert, non-reactive and permanently resistant to steam sterilisation (SIP) and in-place cleaning (CIP).



Food processing plant

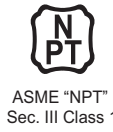
Food and Beverage

PTFE tubing is by far the most widely specified material for Food & Beverage processing applications of all types, including the production of dairy products, powders, syrups, sauces, processed meats, wine and beer. PTFE is chemically inert therefore the hose will not affect the product whatsoever at operating temperatures ranging from -60°C to +260°C. PTFE will not impart any colour, flavour or odour and will not absorb or remove ingredients.

559T(W) PTFE Hose Specifications

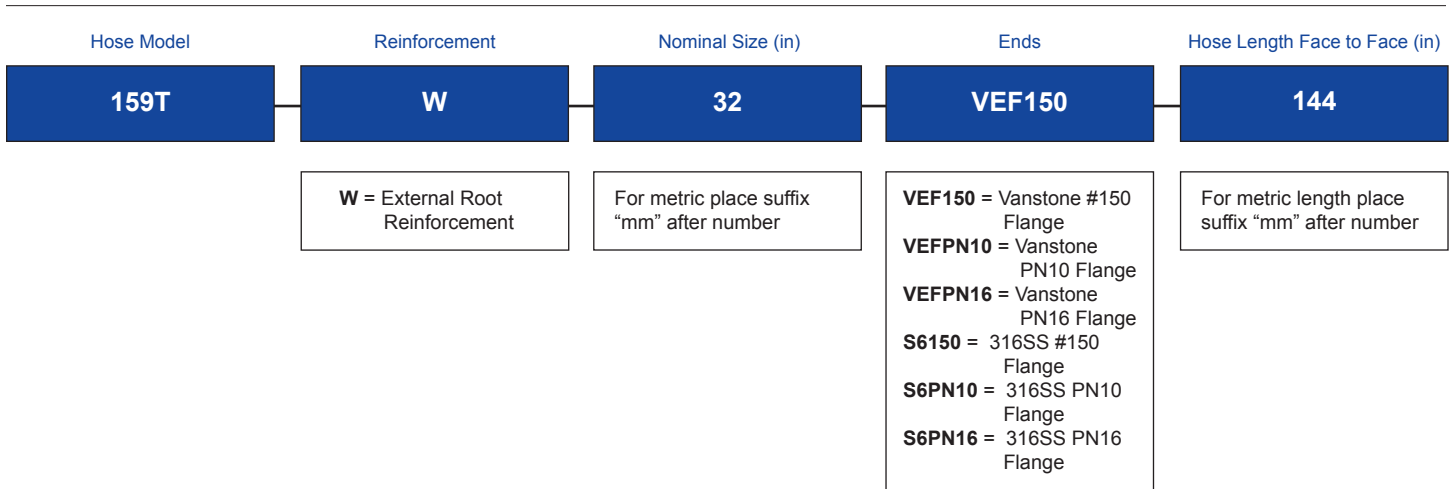
Part Number	Nominal Size		Nominal I.D.		Nominal O.D.		Wall Thickness		Operating Pressure		Max. Continuous Length		Min. Bend Radius		Hose Weight	
	DN	in	mm	in	mm	in	mm	in	bar	psi	m	ft	mm	in	kg/m	lb/ft
559T(W)-16	25	1	25	0.98	36	1.41	1.5	35	2.41	35	3.4	11.2	60	2.36	0.40	2.89
559T(W)-20	32	1 1/4	30	1.65	42	1.65	1.5	28	1.93	28	3.4	11.2	75	2.95	0.50	3.62
559T(W)-24	40	1 1/2	38	2.08	53	2.09	2.0	20	1.38	20	3.4	11.2	80	3.15	1.00	7.23
559T(W)-32	50	2	50	2.51	64	2.52	2.0	20	1.38	20	3.4	11.2	130	5.12	1.10	7.96
559T(W)-40	65	2 1/2	65	3.19	81	3.19	2.0	20	1.38	20	3.4	11.2	215	8.46	1.10	7.96
559T(W)-48	80	3	75	3.66	93	3.66	2.0	13	0.90	13	2.9	9.5	240	9.45	1.50	10.9
559T(W)-64	100	4	86	4.17	106	4.17	2.0	13	0.90	13	2.9	9.5	300	11.8	1.70	12.3
559T(W)-96	150	6	127	6.14	156	6.14	2.5	13	0.90	13	2.4	7.9	400	15.8	4.50	32.5

THORBURN FLEX - Canada
 165 Oneida, Pointe-Claire, Quebec
 Canada, H9R 1A9
 Tel: +1-514-695-8710
 Fax: +1-514-695-1321
 sales@thorburnflex.com
 1-800-363-6613
 (Toll Free North America)



ISIR Romania | CNCAN Romania | EN 13480-2002 | HAF 604 China | TSG China
 (CRN for all Canadian provinces)

How to Order Thorburn 559T(W) Hose Assemblies



*Over 50 years of flexible piping experience
 waiting to serve you...*